

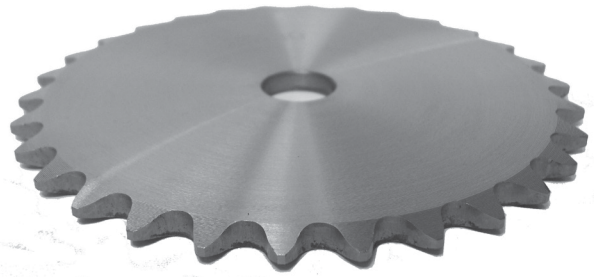
NO. 40 ROLLER CHAIN SPROCKETS

0.500" Pitch

Without Hub

Minimum Plain Bore

Steel



Part Number	Type	No. of Teeth	Outside Diameter (in)	Stock Bore (in)	Maximum Bore (in)	Overall Length (in)
40A15	A	15	2.405"	0.500"	1.250"	0.284"
40A16	A	16	2.563"	0.625"	1.375"	0.284"
40A17	A	17	2.721"	0.625"	1.438"	0.284"
40A18	A	18	2.879"	0.625"	1.500"	0.284"
40A19	A	19	3.038"	0.625"	1.750"	0.284"
40A20	A	20	3.196"	0.625"	1.875"	0.284"
40A21	A	21	3.355"	0.625"	1.875"	0.284"
40A22	A	22	3.513"	0.625"	1.875"	0.284"
40A23	A	23	3.672"	0.625"	2.000"	0.284"
40A24	A	24	3.831"	0.625"	2.250"	0.284"
40A25	A	25	3.989"	0.625"	2.250"	0.284"
40A26	A	26	4.148"	0.625"	2.250"	0.284"
40A27	A	27	4.307"	0.625"	2.250"	0.284"
40A28	A	28	4.466"	0.625"	2.250"	0.284"
40A30	A	30	4.624"	0.625"	2.250"	0.284"
40A32	A	32	5.101"	0.625"	2.250"	0.284"
40A35	A	35	5.578"	0.625"	2.250"	0.284"
40A36	A	36	5.737"	0.625"	2.250"	0.284"
40A40	A	40	6.373"	0.750"	2.375"	0.284"
40A42	A	42	6.691"	0.750"	2.375"	0.284"
40A45	A	45	7.168"	0.750"	2.375"	0.284"
40A48	A	48	7.645"	0.750"	2.375"	0.284"
40A54	A	54	8.599"	0.750"	2.375"	0.284"
40A60	A	60	9.554"	0.750"	2.375"	0.284"
40A70	A	70	11.145"	0.750"	2.750"	0.284"
40A72	A	72	11.750"	0.750"	2.750"	0.284"

Roller chain sprocket part numbers can be determined as follows:

Chain + (A for Hubless or B for Hub) + Number of Teeth

For example: 40A72 = 40 Chain + A for Hubless + 72 Teeth